

2024



PLEXXCON
- R E M E D I A L -

REMEDIAL CAPABILITY STATEMENT

Brisbane | Sunshine Coast | Gold Coast

www.plexxcon.com.au/plexxcon-remedial



ABOUT US

Plexxcon Remedial is a division of Plexxcon with a focus on the remedial sector of the Construction Industry. Plexxcon commenced full operations as a specialist contractor in 2021 and has since found the business has a significant focus on the Remedial Sector.

Plexxcon Remedial was established with a vision to assist our clients with issues associated with aging structures;

- from early inspection and investigation;
- development of defect surveys and reports;
- liaising with specialist suppliers to provide detailed remediation, repair and maintenance systems;
- planning strategies to implement remediation works; and
- staging of works to minimise disruption

Our team have extensive experience working in operational and live environments, ensuring building users and the public are not at risk whilst the work is completed in a quality and compliant manner. Our remediation works range from under \$10,000 up to \$2,000,000. Plexxcon Remedial are well versed in the many challenges that can arise in remedial work and have extensive experience in the remedial sector.

Our Remedial Staff have been involved in the successful delivery of projects in the following sectors:



Commercial



Residential



Industrial



Body Corporate



Marine



Water - Potable
/ Waste



Carparks



Bridges -
Remediation &
Strengthening

OUR SERVICES

As structures age, issues become apparent such as corrosion, concrete spalling and coating failures. Our team have years of experience in:

- Concrete Repair
- Waterproofing
- Epoxy Finishes and Chemical Resistant Coating
- Steel Corrosion Repairs
- Carbon Fiber Strengthening
- Anti-Carbonation Coating



REMEDIATION & REPLACEMENT

As buildings age, issues become apparent such as corrosion, concrete cancer and services failure. Our team have years of experience in identifying causes of failure even before they become apparent.

Multi-staged processes are generally adopted to tackle current issues and prevent future failure. Whether it be a full building concrete cancer repair or replacement of critical infrastructure and services, Plexxcon are here to guide you through the process and bring your building back to health.

HAZARDOUS MATERIALS

Older buildings have a high probability of containing hazardous products due to the materials that were historically used. When it comes time to undertake remedial or renovation works these generally need to be dealt with by removal.

Our team have extensive experience in hazardous material removal to ensure the safety of workers, ongoing building users and compliant controls are fully implemented in accordance with WH&S standards.



WATERPROOFING MEMBRANES

Torch applied membrane refers to bituminous sheet membranes applied by melting a modified bitumen membrane that comes in rolls. The base layer is melted with the use of a propane torch to form a strong bond to the prepared surface, the joints are overlapped and melted to fuse the sheets together forming a continuous waterproof barrier. Torch applied membranes are favored due to their excellent waterproofing properties, flexibility on durability.

OUR SERVICES

ROOF REPLACEMENT

As structures age roofs are exposed to the damaging effects of the environment and require replacement, replacement often requires the supporting rafters and purlins to be upgraded to current specifications for longevity.

Roof replacement often requires substantial stakeholder engagement for the works to be able to be undertaken safely and with minimal disruption to the daily operations of the venue, Plexxcon can assist with replacement of commercial steel roofs.



CRACK INJECTION

Crack Injection is generally undertaken for two reasons, to either seal water ingress issues or to re-bond concrete elements.

The process for both is very similar the main difference is the product selection, typically it involves either drilling small holes to insert injection ports or bonding surface ports along the length of the visible crack (the latter is mainly used for floor injection). The appropriate epoxy or polyurethane resin is then injected into the crack to seal it.



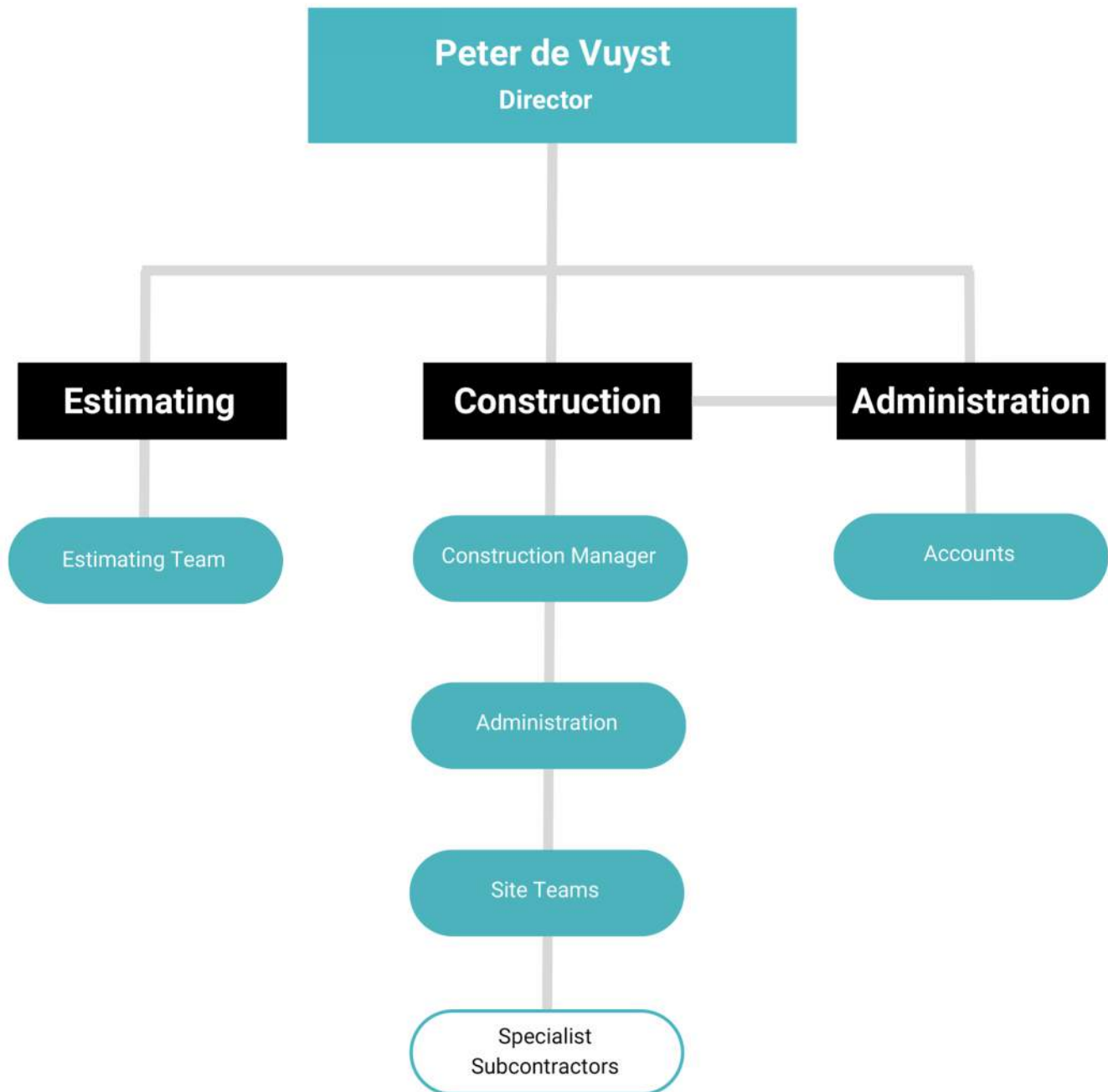
CONCRETE SPALLING - CONCRETE CANCER

Concrete spalling often referred to as Concrete Cancer is a serious deterioration of the reinforcing steel in concrete structures. It occurs when the steel reinforcing in the concrete starts to corrode due to exposure to moisture and oxygen. As the steel corrodes it expands causing cracks and breaks in the surrounding concrete.

The presence of water, chloride ions and carbonation are common factors in concrete cancer. If left untreated concrete cancer can lead to significant structural damage and compromise the integrity of the building. This is exacerbated where there is minimal concrete cover to the reinforcing steel either through older design or incorrect installation.



PLEXXCON REMEDIAL TEAM STRUCTURE





PLEXXCON REMEDIAL SPECIALIST TEAM

PLEXXCON
- R E M E D I A L -

PETER DE VUYST

Director

Peter leads Plexxcon, bringing an extraordinary level of knowledge and understanding of systems, processes, and technical capabilities. With more than two decades of experience in the building industry, Peter's role includes overall management of the construction teams, ensuring successful outcomes in relation to project delivery, quality of building, safety in design, construction delivery and client satisfaction. His strengths lie in his problem-solving abilities and drawing on past experiences to develop innovative and alternative ideas to adapt to new situations, value engineering, and knowing how to overcome issues before they arise.



PAUL JONES

Remedial Projects Manager

As Plexxcon's Remedial Projects Manager Paul has a significant focus on the Remediation Sector of Plexxcon projects. Paul's extensive list of remedial experience in the industry brings a great wealth of knowledge and capability to the Plexxcon Team. Paul brings several years of experience with waterproofing investigation, specification and building rectification across Education, Heritage, Port Infrastructure, Retail and Government Infrastructure. Paul is focused on achieving the best outcomes for his client's with a heavy focus on site safety, financial management, coordination and overall project management. Paul is thoroughly interested in finding efficiencies in project methodologies and ensuring that the project is performed in the most efficient and safe manner for all involved.





COMPANY DETAILS

Name and Address of Company	Eight 3 Constructions Pty Ltd t/a Plexxcon 18/344 Bilsen Road, Geebung QLD 4034 (registered address)
Name of Director	Peter de Vuyst
Total Number of Staff	25
Details of Relevant Licences	QBCC Builder (Open) - 15105455
Quality Assurance System	ISO 9001:2015 Accredited
Safety Management System	ISO 45001:2018 Accredited
Environmental Management System	ISO 14001:2015 Accredited
Pre-Qualification	PQC Registration Number 4887, Level 3 up to \$10,000,000
Annual Construction, Plant & Liability	\$20,000,000
Work Cover	Queensland
Public Liability	\$20,000,000
Professional Indemnity	\$10,000,000

Memberships	Operating Systems
<ul style="list-style-type: none"> - Queensland Master Builders Membership #085450 - Property Council of Australia Membership - #473724 - Mates in Construction 	<ul style="list-style-type: none"> - Procore Project Management System - HammerTech Safety Management System - Xero Accounting Package



APPROVED COMPANY
ISO 45001
Occupational Health & Safety Management Systems

QMS Certification Services



APPROVED COMPANY
ISO 14001
Environmental Management Systems

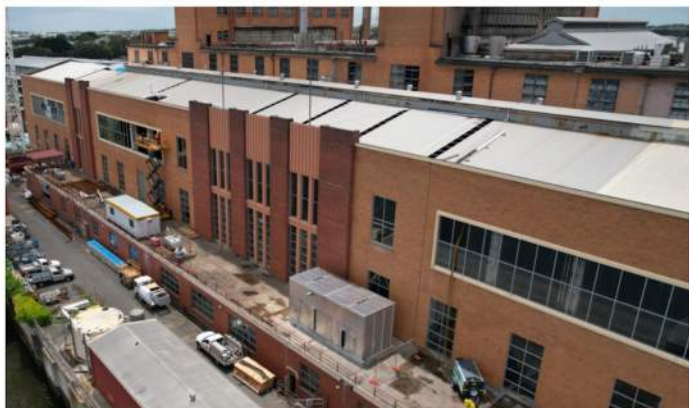
QMS Certification Services



APPROVED COMPANY
ISO 9001
Quality Management Systems

QMS Certification Services

KEY PROJECTS



INDUSTRIAL BUILDING REMEDIAL WORKS

MURARRIE, QLD

INDUSTRIAL

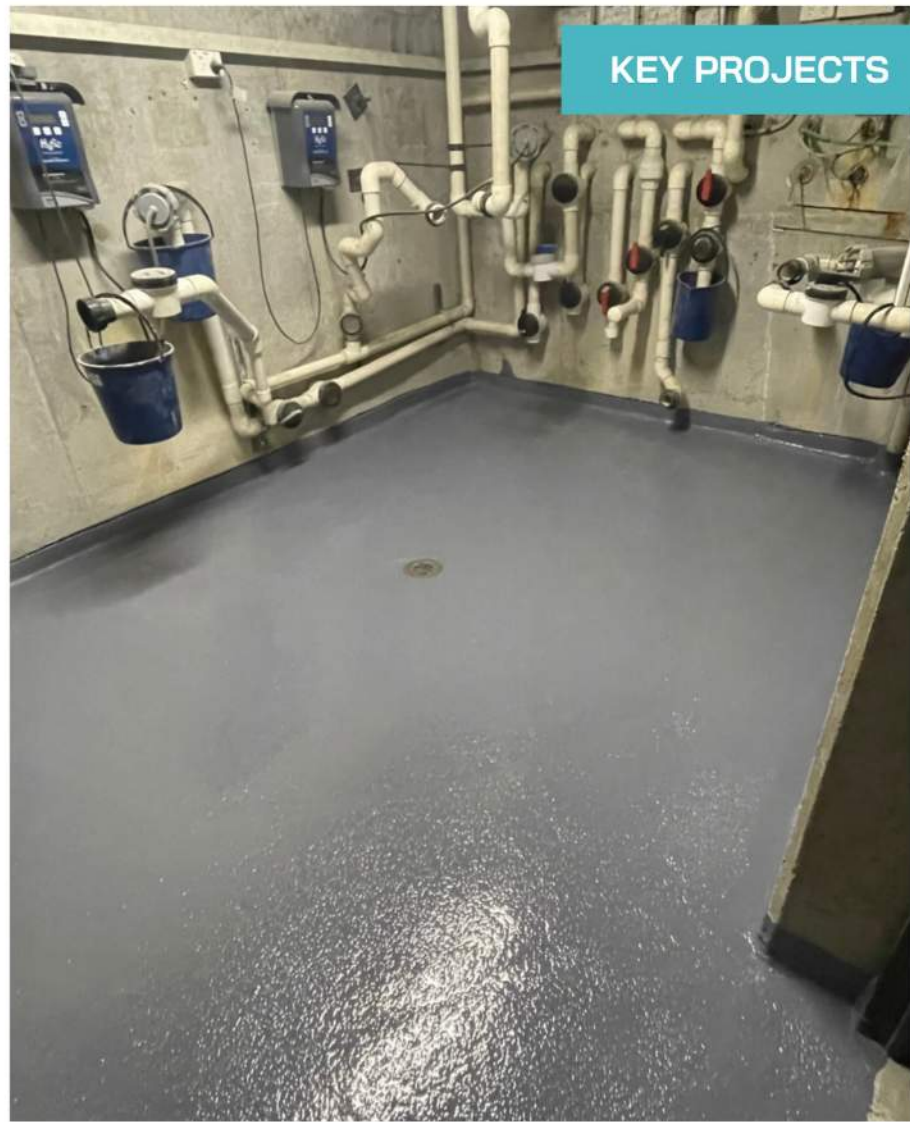
Our construction team recently accomplished a demanding remediation project at an industrial facility operating 24/7, showcasing our ability to undertake intricate tasks in challenging environments. The project was initiated due to the deteriorating conditions of the 1950's era building's façade and windows, demanding a comprehensive renovation before proceeding with a larger ventilation project.

We meticulously demolished over 250m² of windows, surmounting the complexities involved with working at heights using aerial platforms and scaffolding. Post-demolition, we successfully conducted staged concrete remediation on an extensive 6,200m² area of both the external and internal façade over a challenging 14-month period.

Following the remediation, we designed and installed new glazing systems, engineered to accommodate large glass panel surface areas and tailored to withstand the corrosive environment due to the facility's proximity to open waterways. Through meticulous planning and a progressive approach to installation, we ensured minimal disruption to the ongoing operations of the facility.

Throughout the project, we worked closely with the facility to coordinate our activities. Establishing and efficiently moving exclusion zones allowed us to ensure the continuity of the facility's operations, showcasing our adaptability in a live, industrious environment.

Upon completion, we not only facilitated the progress of a crucial ventilation project but also considerably enhanced the facility's aesthetic appeal. This project stands as a testament to our capability to deliver on safety, functionality, and aesthetics while adeptly managing ongoing facility operations.



ISTAY RIVER CITY, CONCRETE REMEDIATION & WATERPROOFING

BRISBANE, QLD

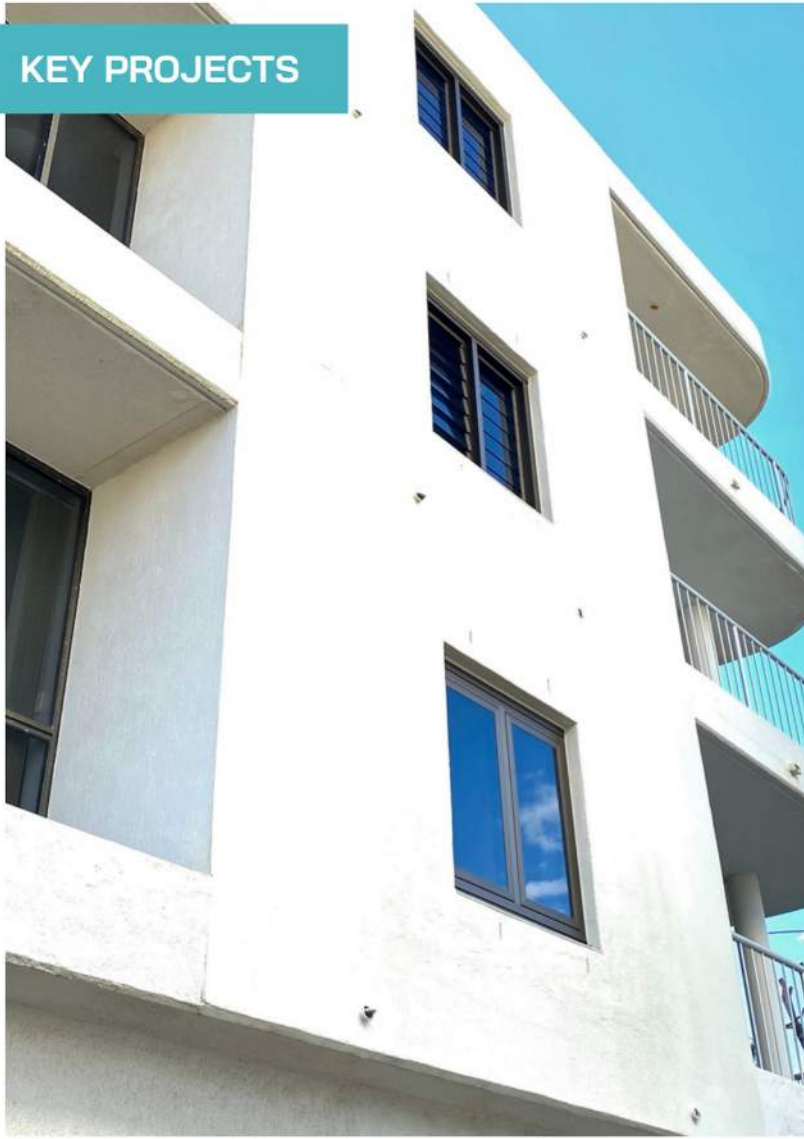
BODY CORPORATE

The Plexxcon Remedial team were engaged to make safe, and remediate the pool pump room, suspended slab below and structural steel to the shop front ceiling for the iStay River City Apartments.

Large areas of concrete spalling in the pool pump room were removed and replaced and TREMproof waterproofing was applied with new falls to drainage to prevent future corrosion and damage.

Under the suspended slab on level 4, was the most concerning with 25kg lumps of concrete smashing through the ceiling below. A further 120kg of concrete spalling was removed through the process.

As part of the remedial work, we also added structural steel support to the suspended façade as an added measure of future safety.



JUBILEE, PT ARKWRIGHT WINDOW & LINTEL REPLACEMENT

POINT ARKWRIGHT, QLD

BODY CORPORATE

Plexxcon have recently completed the Jubilee Pt Arkwright Window and Lintels Replacement project. This project consists of removal of existing leaking windows, window lintels and brickwork fins on various windows in the Jubilee Apartment Complex and replacing them with an updated design. The project was undertaken whilst all units remained tenanted, which required a high level of logistical planning to ensure that access to all units was not impeded.



MURARRIE INDUSTRIAL COAL BUNKER ROOF REMEDIATION

MURARRIE, QLD

INDUSTRIAL

Plexxcon recently completed a multi-faceted project at an active coal bunker and coal receiving bay that operates 24/7. The project involved the replacement of windows, 200m² of roofing, box gutters, and facade remediation. The works were carried out 20m above a fully operational factory, necessitating close coordination with plant operators to minimise the risk of falling objects.

Challenges and Solutions:

High-Risk Environment: The primary concern during the project was the presence of respirable coal dust, which poses significant health risks. Our team employed stringent safety measures, including the use of appropriate personal protective equipment (PPE), dust suppression techniques, and regular monitoring of air quality to ensure the safety of our workforce and the client's personnel.

24/7 Operations: The coal bunker and receiving bay could not be shut down during construction, requiring our team to work around the clock to minimise disruption. We implemented detailed scheduling and close communication with the plant operators to ensure smooth operations and avoid any downtime.

Height and Access: The project was carried out 20m above ground level, posing challenges in access and safety. Our team utilised specialised equipment, such as aerial work platforms and fall arrest systems, to ensure the safe and efficient completion of the project.

Through our expertise and dedication to safety, Plexxcon successfully completed the project on time and within budget. Our careful planning, execution, and attention to detail allowed us to achieve the desired results while ensuring the uninterrupted operation of the client's facility.



PLEXXCON
- R E M E D I A L -

plexxcon.com.au/plexxcon-remedial

Phone: 0418 957 188



18/344 Bilsen Rd, Geebung, Q 4034 | 1/38 Technology Dr, Warana Q 4575